

Accessories according to DIN 43772

Neck tube, welding pieces
for thermowells

HR
S2

Versions

Model HR

Description

Neck tube
according to DIN 43 772

Application

Distance extension between
process connection and instrument
head e.g. for the bridging of
insulating material.

Thermowells

SF4, SF4F, SF5, SF6, SF7

Thermometer Connection

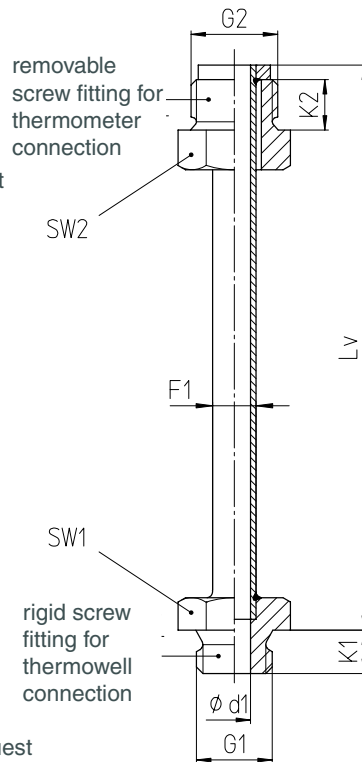
A3/B3 (M 24x1.5)
Ø-Stem: 6 or 8 mm (0.24", 0.31")

Material

1.4571 (316 stainless steel)

Options

- Other threads upon request
- Other length L_v upon request
- Other materials upon request
- Other tube dimensions upon request



Dimensional Data (mm / inches)

G1	SW1	Lv	K1	G2	SW2	K2	d1	F1
M 18x1.5	24 0.94	155 6.10	12 0.47	M 24x1.5	24 0.94	14 0.5	9 0.35	12 0.47
		165 6.50						
		155 6.10						
G 1/2 B	27 1.06	155 6.10	12 0.47	M 24x1.5	24 0.94	14 0.5	9 0.35	12 0.47
		165 6.50						
		155 6.10						
G 3/4 B	32 1.26	155 6.10	12 0.47	M 24x1.5	24 0.94	14 0.5	9 0.35	12 0.47
		165 6.50						
		155 6.10						

Ordering information: HR, G1 = G 1/2 B, Lv = 155, 1.4571

Model S2

Description

Welding pieces

Application

Process connection for
welding thermowells according to DIN 43 772

Thermowell

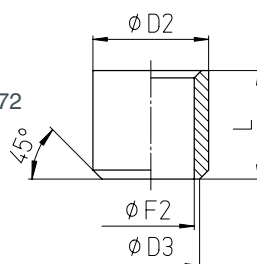
SF4, SF4.1

Material

1.4571 (316 stainless steel)

Options

Other materials and length upon request



Dimensional Data (mm / inches)

F2	D2	D3	L
24 G 7	32 1.26	27 1.06	30 1.18
	35 1.38	30 1.18	
32 G 7	40 1.57	35 1.38	

Ordering information: S2, F2 = 24, 1.4571



Sales and Export South, West, North

ARMATURENBau GmbH

Manometerstraße 5 • D-46487 Wesel - Ginderich
Tel.: +49 (0)28 03/91 30-0 • Fax: +49 (0)28 03/10 35
armaturenba.u.com • mail@armaturenba.u.com

Subsidiary Company, Sales and Export East

MANOTHERM Beierfeld GmbH 8.8301

Am Gewerbepark 9 • D-08344 Grünhain-Beierfeld
Tel.: +49 (0)37 74/58-0 • Fax: +49 (0)37 74/58-545
manotherm.com • mail@manotherm.com