

# Special Stems for Gas-Actuated Thermometers A20.1/A20.11/A20.12

Process connections for food-, biotechnics-, and pharmaceutical industry

A20.3/A20.6

## Application

For application in food-, biotechnics- and pharmaceutical industry.  
For medium temperatures up to 400 °C.

## Standard Versions

For thermometers with rigid mount to stem or for thermometers with max. 5 m capillary line.

### Temperature Sensor (Stem)

1.4435<sup>1)</sup> (316 stainless steel), wetted surface electropolished,  
Ra < 0.8 µm  
stem end and shapes rounded

### Stem-Ø dF

10, 12 or 16 mm (0.4", 0.47" or 0.63")

### Stem length

L= 30 mm to 200 mm (see below)

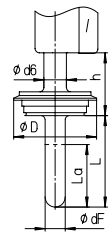
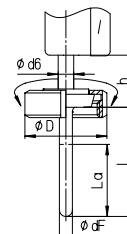
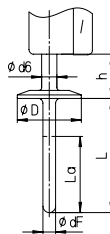
<sup>1)</sup> remainders of 1.4571 (316 stainless steel)



## Options among others

- Other stem lengths up to 400 mm
- Other capillary line lengths upon request
- Other nominal sizes upon request
- Other process connections upon request
- EHEDG-Hygiene certificate for A 20.6, 3A-Certificates for A20.1/ A20.11/ A20.12

Stem Model	A20.1	A20.11	A20.12	A20.3	A20.6
<b>Process connection:</b>	<b>Clamp</b>		<b>Tri-Clamp</b>	<b>Conical coupling / union nut</b>	<b>Varivent®</b>
<b>Norm:</b>	ISO 2852 for tubes acc. to ISO 2037 and BS 4825	DIN 32676, series A, for tubes acc. to DIN 11 850	for tubes acc. to BS 4825 and O.D.-tube, ASME BPE and ISO 1127	DIN 11851	Varinline®-case
<b>Diameter dF:</b>	10, 12 mm			10, 12 mm	16 mm
<b>Diameter d6:</b>	12			12	18
<b>Length h:</b>	35			45	52
<b>Order length:</b>	L			L	L



Process connection:	DN / NPS			PN <sup>2)</sup> bar	D mm
	A20.1 ISO 2852	A20.11 DIN 32676	A20.12 BS 4825-3		
			¾"	25	25.4
	12; 12.7; 17.2; 21.3	10 25 20		25	34
	25; 33.7; 38	25, 32, 40	1"	25	50.5
	40, 51(2")	50	1½" 2"	25	64

DN	PN <sup>2)</sup>	D
20	25	54
25	25	63
32	25	70
40	25	78
50	25	92

DN	PN	D
50	25	66
68	16	84

<sup>2)</sup> PN is being defined by the stem, not by the process connections.

## Stem Length (L), active Length (La)

Stem model:	A20.1, A20.11, A20.12, A20.3	A20.6
<b>Stem length L:</b>	40 to 200 mm	30 to 200 mm
<b>Active length (La):</b>	for L = 40 to 80 mm: La = L for L = 81 to 200 mm: La = 80 mm	for L = 30 to 60 mm: La = L for L = 61 to 200 mm: La = 60 mm

Technical changes, replacement of materials and errors excepted.



Sales and Export South, West, North  
**ARMATURENBAU GmbH**  
Manometerstraße 5 • D-46487 Wesel - Ginderich  
Tel.: +49 (0)28 03/91 30-0 • Fax: +49 (0)28 03/10 35  
armaturenbau.com • mail@armaturenbau.com

Subsidiary Company, Sales and Export East  
**MANOTHERM Beierfeld GmbH**  
Am Gewerbepark 9 • D-08344 Grünhain-Beierfeld  
Tel.: +49 (0)37 74/58-0 • Fax: +49 (0)37 74/58-545  
manotherm.com • mail@manotherm.com

8299.3

02/11