

Diaphragm Seals

Plastic Model, PN 10

Female thread 1/2" BSP

Model **MDM 7190**

This data sheet contains all important information on all available versions of model MDM 7190. Detailed information on advantages, applications, features and ordering information can be found on our model overview 7000 where you will also find an overview of our other chemical seal versions.

Application

Diaphragm seals model 7190 are suitable for aggressive and neutral media that are not gluey or dirty and do not corrode the materials mentioned below. Pressure gauges, pressure switches and transducers up to PN 10 can be attached.

Construction

The diaphragm is fixed between upper and lower part. Measuring instrument and diaphragm seal are mounted to each other after being filled separately.



Standard Version

Instrument connection	1/2" BSP female, PP fibre-glass reinforced
Process connection	1/2" BSP female, PVC-U (polyvinyl chloride), glue joint applicable according to DIN ISO
Diaphragm	EPDM, PTFE-coated
Nominal pressure	PN 10 at + 20 °C (+68 °F) Limitation see diagrams on page 2
Pressure ranges	Pressure gauges: 0-2.5 to 0-10 bar (0-30 to 0-160 psi) other measuring instruments upon request
Filling fluid	FA 7 (Glystantin)
Reference temperature	+20 °C (+68 °F)

Special Versions

• Instrument connection	1/4" BSP female
• Process connection	female 1/4" BSP, 1/4" NPT or 1/2" NPT, PP (polypropylene) or PVDF (polyvinylidene fluoride), process connection applicable externally as weld joint acc. to DIN ISO
• Diaphragm	Viton
• Filling fluid	according to medium requirements
• Capillary line	between diaphragm seal and measuring instrument Please regard: - a mounting device is required for e.g. front flange, rear mounting flange or gauge holder bracket - the acceptable length of the capillary line depends on the pressure range und filling fluid, details upon request

How to Order:

Please regard the detailed information on the required ordering information in our model overview 7000 and the corresponding data sheet for the measuring instrument.

Model code:	MDM 7190
Process connection:	1/2" BSP-female = standard optional: 1/4" BSP female, others see above PVC-U = standard optional PP or PVDF
Instrument connection:	1/2" BSP-female (others see above) optional: 1/4" BSP female
Specifics:	see above



ARMATURENBAU GmbH
Manometerstraße 5 D-46487 Wesel - Ginderich
Phone: (0 28 03) 9130-0 Fax: (0 28 03) 10 35
armaturenbau.com mail@armaturenbau.com

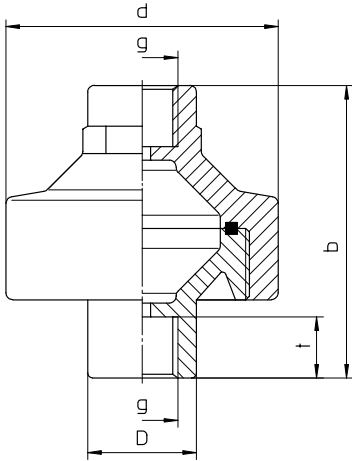


Subsidiary Company, Sales and Export East

MANOTHERM Beierfeld GmbH
Am Gewerbepark 9 • D-08344 Grünhain-Beierfeld
Phone: (0 37 74) 58-0 Fax: (0 37 74) 58-545
manotherm.com mail@manotherm.com

7190
01/11

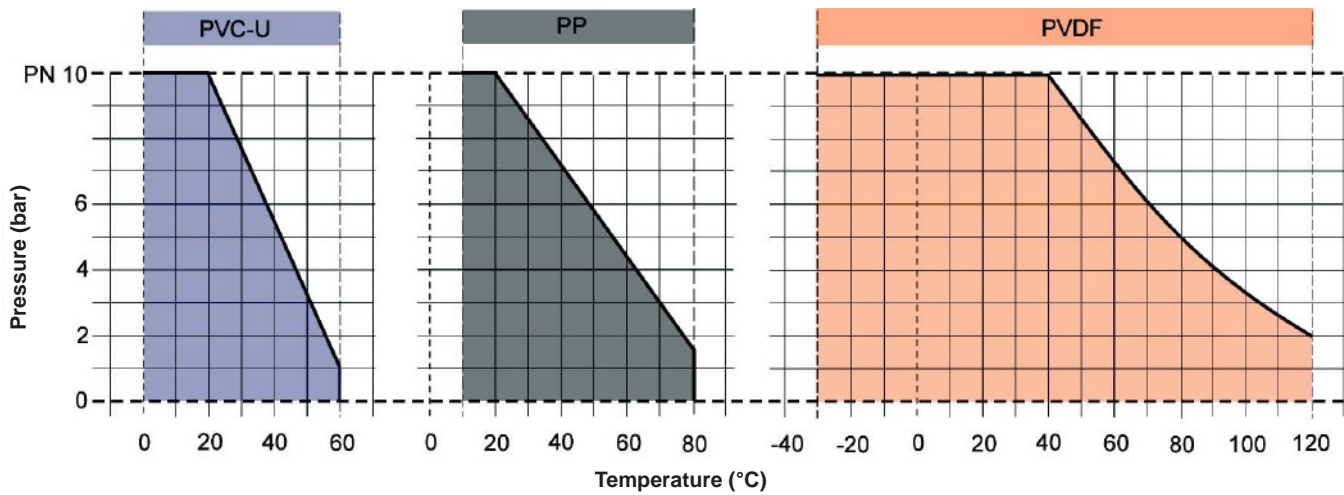
Dimensional Data and Weights, Pressure-/ Temperature-Diagram



Dimensional Data (mm / inches) and Weights (kg / lb)

D	PN	b ^{±1.5}	d	g	t	Weight (approx.)		
						PVC-U	PP	PVDF
25 .98	10 .4	86 3.39	80 3.19	¼" BSP	18 .71	.25 .55	.18 .40	.31 .68
32 1.26	10 .4	86 3.39	80 3.19	½" BSP	22 .87	.46 1.02	.32 .71	.59 1.30

Pressure- / Temperature-Diagram



Our instruments are advanced constantly, therefore changes are accepted.