

Capsule Gauge for Low Pressure

KPChg 50

Crimped-on Ring Case Stainless Steel

Standard Versions

Information on general and metrological features (load limits / temperature limitations) and standard pressure ranges / scale divisions can be found in model overview 6000.

Accuracy (EN 837-3)

Class 1.6

Case

with polished crimped-on ring, 1.4301 (304 stainless steel)

Case Protection Type (EN 60 529 / IEC 529)

IP 44 for bottom connection

IP 54 for back connection

Nominal Case Size

50 (mm) (2")

Wetted Parts

Type -1: Connection:	brass
Diaphragm capsule:	CuBe-alloy
O-ring sealing:	NBR

Case Configuration

Connection:	screwed
Position of the connection:	bottom connection, optional: centre back connection (rm)
Mounting device:	without, optional front flange for panel mounting (Fr) or u-clamp for panel mounting (BFr), see page 2

Pressure Ranges (EN 837-3)

0-160 mbar (0-60 "WC) up to 0-600 mbar (0-250 "WC)

Process Connection

G ¼ B (¼" BSP)

Window

Polycarbonate (punched for zero adjustment)

Movement

Brass / German silver for type -1

Dial

Aluminium, black figures, white background

Pointer

Aluminium, black

Zero Adjustment

Frontsided



Ordering Information, Standard Pressure Ranges, Options

see pages 3 and 4

Special Versions and further Options among others

- Other process connections upon request
- Other pressure ranges and / or special scales, e.g. double scale mbar/kPa, coloured fields or areas, dial inscriptions, negative scale etc. .
- Case parts 1.4404 (316 L stainless steel) upon request
- Position of the connection radial at 3 o'clock, 9 o'clock, 12 o'clock (others upon request) or position of connection other than vertical installation (90°) for types without case filling
- GOST-version for Russia, Ukraine, Kazakhstan

Accessory

see catalogue heading 11



Sales and Export South, West, North

ARMATURENBAU GmbH

Manometerstraße 5 • D-46487 Wesel - Ginderich
Tel.: +49 (0) 28 03/91 30-0 • Fax: +49 (0) 28 03/ 10 35
armaturenbau.com • mail@armaturenbau.com

Subsidiary Company, Sales and Export East

MANOTHERM Beierfeld GmbH

Am Gewerbepark 9 • D-08344 Grünhain-Beierfeld
Tel.: +49 (0) 37 74/58-0 • Fax: +49 (0) 37 74/58-545
manotherm.com • mail@manotherm.com

6232

09/12

Case Configurations, Code Letters, Dimensional Data and Weights

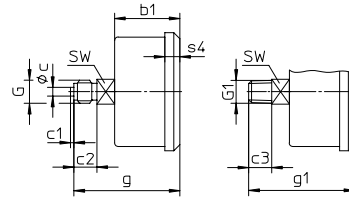
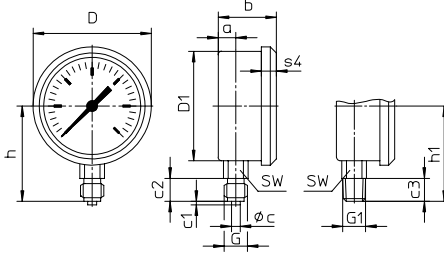
Bottom connection

Centre back connection

no mounting device

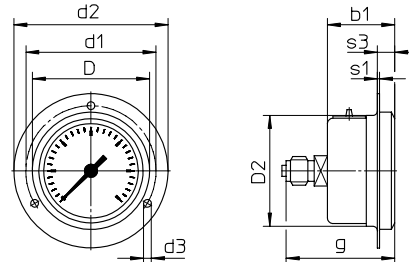
(no additional code letter)

code letters: **rm**



with front flange for panel mounting

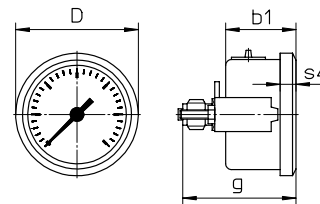
code letters: **rmFr**



recommended panel cut out $\text{Ø } 54 \pm 0.3 \text{ mm (0.01")}$

with u-clamp for panel mounting

code letters: **rmBFr**



recommended panel cut out $\text{Ø } 51 \pm 0.3 \text{ mm (0.01")}$

Dimensional data (mm/ inches) and weights (kg/ lb)

NCS	a	b	b1	c	c1	c2	c3	D	D1	D2	d1	d2	d3	G	G1
50 Model KPChg	10 .4	36 1.42	31 1.22	5 .2	2 .08	13 .51	13 .51	54 2.13	48.5 1.91	51 2.01	60 2.36	71 2.8	3.6 .14	G ¼ B (¼" BSP) M 12x1.5	¼" NPT

NCS	g	g1	h ^{±1}	h1 ^{±1}	s1	s3	s4	SW	approx weight ¹⁾
50 Model KPChg	54 2.13	54 2.13	45 1.77	45 1.77	1 .04	8 .31	7 .28	14 .55	0.12 / 0.26

¹⁾Information for version without mounting device

Ordering Information with Standard Pressure Ranges, Options

Basic Model:	Capsule Gauge for Low Pressure, Crimped-on Ring Case						KPChg
Case Filling:	without						without code letters
Nominal Case Size:	case-Ø 50 (mm) (2")						50
Wetted Material:	copper alloy						-1
Case Configuration:	case / connection	screwed					without code letters
	position of the connection	bottom centre back					without code letters rm
	mounting device	without front flange for panel mounting u-clamp for panel mounting					without code letters Fr BFr
Pressure Ranges:	mbar			inchWC			
	Vacuum	Compound Ranges	Pressure	Vacuum	Compound Ranges	Pressure	
	-160 - 0	-60 - 100 -100 - 60	0 - 160	-60 - 0	-20 - 40 -40 - 20	0 - 60	e.g. 0-250 mbar
	-250 - 0	-100 - 150 -150 - 100	0 - 250	-100 - 0	-40 - 60 -60 - 40	0 - 100	
	-400 - 0	-150 - 250 -250 - 150	0 - 400	-160 - 0	-60 - 100 -100 - 60	0 - 160	
	-600 - 0	-200 - 400 -400 - 200	0 - 600	-250 - 0	-100 - 150 -150 - 100	0 - 250	
Process Connection:	standard thread	G ¼ B (¼" BSP)					G ¼ B
	options:	¼" NPT					¼" NPT
		M12x1.5					M 12 x 1.5
		G ⅜ B (⅜" BSP)					G ⅜ B
		⅜" NPT					⅜" NPT
		M10x1					M 10x1
Options:	see page 4						
Example:							KPChg 50-1, 0-250 mbar, G ¼ B

Further Options regarding Ordering Information

Basic Model:	Capsule Gauge for Low Pressure, Crimped-on Ring Case	KPChg
Model Code:		see page 3
Options:	<p>red mark on the dial</p> <p>special adjustment</p> <p>case polished</p> <p>silicone-free version</p> <p>restrictor screw in orifice Ø 0.3 mm (0.01")</p> <p>pressure inlet port material: brass</p> <p>overrange protection (üs) and / or low pressure protection (us)¹⁾ 3-times üs or us¹⁾</p> <p>measuring point marking with stainless steel-plate 12 mm x 55 mm (0.47" x 2.17"), wire mounting or sticker on the case coverage</p>	<p>(order at the moment still as cleartext)</p>

Special Versions: Please describe your requirements clearly
¹⁾ max.- 1000 mbar Changes, replacement of materials and printing errors excepted