

Capsule Gauge for Low Pressure

Crimped-on Ring Case Stainless Steel

KPChg 63
KPChgG 63

Standard Versions

Information on general and metrological features (load limits / temperature resistance) and standard pressure ranges / scale markings can be found in model overview 6000.

Accuracy (EN 837-3)

Class 1.6

Case

with polished crimped-on ring, 1.4301 (304 stainless steel)

Case Protection Type (EN 60 529 / IEC 529)

IP 44 for model KPCh with bottom connection
IP 54

Case Ventilation

Model KPChgG Case ventilation closable
Ventilation required for internal pressure compensation

Case Filling

for model KPChgG: Glycerin

Nominal Case Size

63 (mm) (2½")

Wetted Parts

Type -1: Connection: brass
Diaphragm capsule: CuBe-alloy
O-ring sealing: NBR

Type -3: Connection: 316 stainless steel
Diaphragm capsule: 316 stainless steel
O-ring sealing: FPM

Case Configuration

Connection: screwed
Position of the connection: bottom connection,
optional: centre back connection (**rm**)
without, optional back flange for
surface mounting (**Rh**) / front flange
for panel mounting (**Fr**) or
u-clamp for panel mounting (**BFr**),
see page 2

Mounting device:

Pressure Ranges (EN 837-3)

KPChg 0- 25 mbar (0-10 "WC) to 0-600 mbar (0-250 "WC)
KPChgG 0-100 mbar (0-40 "WC) to 0-600 mbar (0-250 "WC)

Process Connection

G ¼ B (¼" BSP)

Window

Polycarbonate (punched for zero adjustment)

Movement

Brass / German silver for type -1
Stainless steel for type -3

Dial

Aluminum, black figures, white background

Pointer

Aluminum, black

Zero Adjustment

Frontsided



Ordering Information, Standard Pressure Ranges, Options

see pages 3 and 4

Special Versions and Further Options Among Others

- Other process connections upon request
- Other pressure ranges and / or special scales, e.g. double scale mbar/kPa, coloured fields or areas, dial inscriptions, negative scale etc.
- Case parts 1.4404 (316 L stainless steel) upon request
- Increased case protection type, e.g. IP 65 upon request
- Wetted parts free of grease and oil for type -3 upon request
- Oxygen version for type -3 without case filling upon request
- Execution for higher medium temperatures upon request
- Position of the connection radial at 3 o'clock, 9 o'clock, 12 o'clock (others upon request) or position of connection other than vertical (90°) for types without case filling
- GOST-version for Russia, Ukraine, Kazakhstan

Accessory

see catalogue heading 11



Sales and Export South, West, North

ARMATURENBAU GmbH

Manometerstraße 5 • D-46487 Wesel - Ginderich
Tel.: +49 (0) 28 03/91 30-0 • Fax: +49 (0) 28 03/ 10 35
armaturenbau.com • mail@armaturenbau.com

Subsidiary Company, Sales and Export East

MANOTHERM Beierfeld GmbH

Am Gewerbepark 9 • D-08344 Grünhain-Beierfeld
Tel.: +49 (0) 37 74) 58-0 • Fax: +49 (0) 37 74/58-545
manotherm.com • mail@manotherm.com

6212

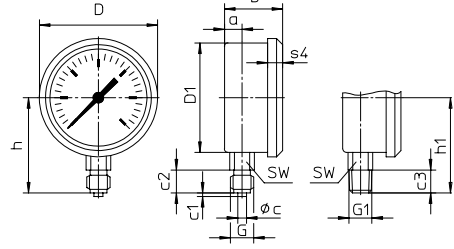
10/14

Case Configurations, Code Letters, Dimensional Data and Weights, Blow-out Device

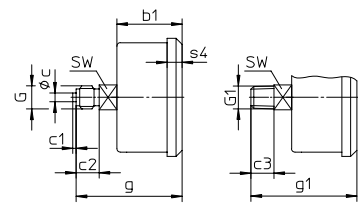
Bottom Connection Centre Back Connection

no mounting device

(no additional code letter)

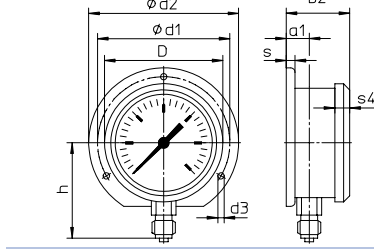


code letters: **rm**

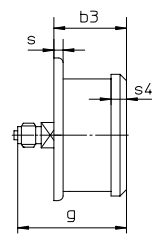


with back flange for surface mounting

code letters: **Rh**



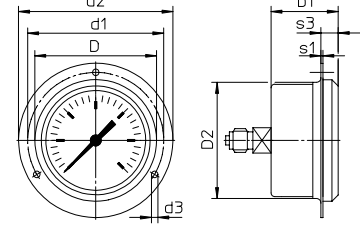
code letters: **rmRh**



(available upon request, but according to EN 837-3 not recommended)

with front flange for panel mounting

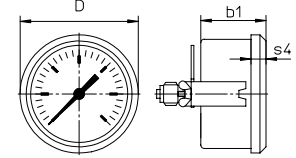
code letters: **rmFr**



recommended panel cut out $\varnothing 67 \pm 0.3$ mm (0.01")

with u-clamp for panel mounting

code letters: **rmBFr**



recommended panel cut out $\varnothing 64 \pm 0.3$ mm (0.01")

Dimensional Data (mm/ inches) and Weights (kg/ lb)

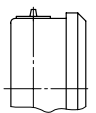
NCS	a	a1	b	b1	b2	b3	c	c1	c2	c3	D	D1	D2	d1	d2	d3	G	G1
63 Model KPChg	10 .4	13 .51	40 1.57	39 1.54	43 1.7	42 1.65	5 .2	2 .08	13 .51	13 .51	67 2.63	62 2.44	64 2.52	75 2.95	85 3.35	3.6 1.42	G 1/4 B (1/4" BSP) M 12x 1.5	1/4" NPT
63 Model KPChgG	10 .4	13 .51	49 1.93	39 1.54	43 1.7	52 2.05	5 .2	2 .08	13 .51	13 .51	67 2.63	62 2.44	64 2.52	75 2.95	85 3.35	3.6 1.42	G 1/4 B (1/4" BSP) M 12x 1.5	1/4" NPT
10-times üs 63 Model KPChg Model KPChgG	10 .4	13 .51	49 1.93	49 1.93	43 1.7	52 2.05	5 .2	2 .08	13 .51	13 .51	67 2.63	62 2.44	64 2.52	75 2.95	85 3.35	3.6 1.42	G 1/4 B (1/4" BSP) M 12x 1.5	1/4" NPT

NCS	g	g1	h ^{±1}	h1 ^{±1}	s	s1	s3	s4	SW	approx. weight ¹⁾
63 Model KPChg	62 2.44	62 2.44	54 2.13	54 2.13	5 .2	1 .04	10.5 .41	9.5 .37	14 .55	0.18 / .40
63 Model KPChgG	62 2.44	62 2.44	54 2.13	54 2.13	5 .2	1 .04	10.5 .41	9.5 .37	14 .55	0.33 / .73
10-times üs 63 Model KPChg Model KPChgG	72 2.83	72 2.83	54 2.13	54 2.13	5 .2	1 .04	10.5 .41	9.5 .37	14 .55	0.18 / .40 0.33 / .73

¹⁾ Information for version without mounting device

Blow-out Device

Model KPChgG
Case ventilation 26
closable



Further Options Regarding Ordering Information

Basic Model:	Capsule Gauge for Low Pressure, Crimped-on Ring Case	KPChg
Model Code:		see page 3
Options:	<p>red mark on the dial</p> <p>plastic clip red or green external at the crimped-on ring</p> <p>special adjustment</p> <p>case ventilation no. 22 for outdoor installation¹⁾</p> <p>case polished</p> <p>silicone-free version</p> <p>restrictor screw in pressure inlet port orifice Ø 0.3 mm (0.01")</p> <p>material: as process connection, brass or stainless steel</p> <p>overrange protection (üs) and / or low pressure protection (us)²⁾</p> <p>for types -1 (copper alloy) 3-times üs³⁾ or us 10-times üs 0 - 25 mbar and above 10-times us -100 - 0 mbar and above</p> <p>combination 10-times üs and 10-times us only for compound ranges for spans 100 mbar (40 "WC) and above</p> <p>for types -3 (stainless steel) 3-times üs³⁾ or us 10-times üs 0 - 25 mbar and above 10-times us -100 - 0 mbar and above</p> <p>combination 10-times üs and 3-times us only for compound ranges for spans 40 mbar (16 "WC) and above</p> <p>measuring point marking with stainless steel plate 12 mm x 55 mm (0.47" x 2.17"), wire mounting or sticker on the case coverage</p>	
		(order at the moment still as cleartext)

Special Versions: Please describe your requirements clearly

¹⁾ only for version -1 and span 100 mbar and above

²⁾ max. - 1000 mbar

³⁾ only for dry versions