

Capsule Gauge for Low Pressure

Bayonet ring case stainless steel

KPCh 63
KPChG 63

Standard Versions

Information on general and metrological features (load limits / temperature limitations) and standard pressure ranges / scale divisions can be found in model overview 6000.

Accuracy (EN 837-3)

Class 1.6

Case

with bayonet ring, 1.4301 (304 stainless steel)

Case Protection Type (EN 60 529 / IEC 529)

IP 44 for model KPCh with bottom connection
IP 54

Case Ventilation

Model KPChG Case ventilation closable
Ventilation required for internal pressure compensation

Case Filling

for model KPChG: Glycerin

Nominal Case Size

63 (mm) (2½")

Wetted Parts

Type -1: Connection: brass
Diaphragm capsule: CuBe-alloy
O-ring sealing: NBR

Type -3: Connection: stainless steel 316 SS
Diaphragm capsule: stainless steel 316 SS
O-ring sealing: FPM

Case Configuration

Connection: screwed
Position of the connection: bottom connection,
optional: centre back connection (rm)
Mounting device: without, optional back flange for
surface mounting (Rh) / front flange
for panel mounting (Fr), see page 2

Pressure Ranges (EN 837-3)

KPChg 0- 25 mbar (0-10 "WC) to 0-600 mbar (0-250 "WC)
KPChgG 0-100 mbar (0-40 "WC) to 0-600 mbar (0-250 "WC)

Process Connection

G ¼ B (¼" BSP)

Window

KPCh Instrument glass for type -1
Laminated safety glass for type -3
Specifics for case configuration Fr
Polycarbonate (punched for zero adjustment)

KPChG Polycarbonate (punched for zero adjustment)

Movement

Brass / German silver for type -1
Stainless steel for type -3

Dial

Aluminum white, scaling black



Pointer

Aluminum, black

Zero Adjustment

Frontsided

Ordering Information, Standard Pressure Ranges, Options

see pages 3 and 4

Special Versions and Further Options Among Others

- Other process connections upon request
- Other pressure ranges and / or special scales, e.g. dual scale mbar/kPa, coloured fields or ranges, dial inscriptions, negative scale etc.
- Case parts 1.4404 (316 L stainless steel) upon request
- Increased case protection type, e.g. IP 65 upon request
- Wetted parts free of grease and oil for type -3 upon request
- Oxygen version for type -3 without case filling upon request
- Version for higher medium temperatures upon request
- Position of the connection radial at 3 o'clock, 9 o'clock, 12 o'clock (others upon request) or position of connection other than vertical installation (90°) for types without case filling
- GOST-version for Russia, Ukraine, Kazakhstan

Accessory

see catalogue heading 11



Sales and Export South, West, North

ARMATURENBAU GmbH

Manometerstraße 5 • D-46487 Wesel-Ginderich
Tel.: +49 (0) 28 03/91 30-0 • Fax: +49 (0) 28 03/ 10 35
armaturenbau.com • mail@armaturenbau.com

Subsidiary Company, Sales and Export East

MANOTHERM Beierfeld GmbH

Am Gewerbepark 9 • D-08344 Grünhain-Beierfeld
Tel.: +49 (0) 37 74/58-0 • Fax: +49 (0) 37 74/58-545
manotherm.com • mail@manotherm.com

6211

10/14

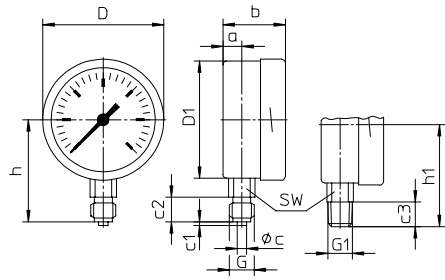
Case Configurations, Code Letters, Dimensional Data and Weights, Blow-out Device

Bottom Connection

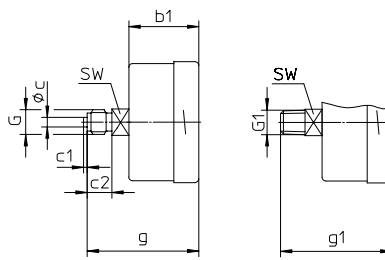
Centre Back Connection

no mounting device

(no additional code letter)

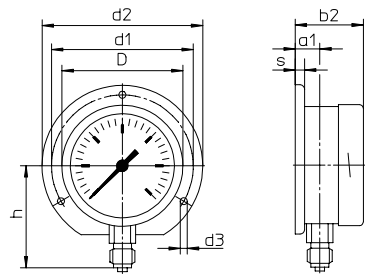


code letters: **rm**

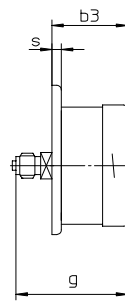


with back flange for surface mounting

code letters: **Rh**



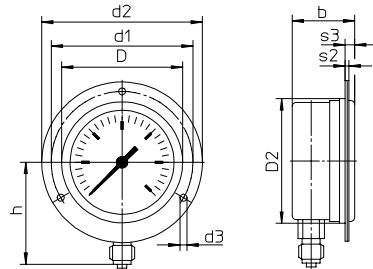
code letters: **rmRh**



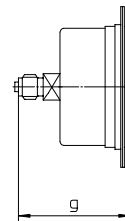
(available upon request, but according to EN-837-3 not recommended)

with front flange for panel mounting

code letters: **Fr**



code letters: **rmFr**



(available upon request, but according to EN-837-3 not recommended)

Front flange for panel mounting with slotted holes, separate cover ring, recommended panel cut out: $\varnothing 67 \pm 0.3$ mm (0.01")

Dimensional Data (mm / inch) and Weights (kg / lb)

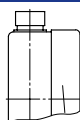
NCS	a	a1	b	b1	b2	b3	c	c1	c2	c3	D	D1	D2	d1	d2	d3	G	G1
63 Model KPCh	10 .4	13 .51	38 1.5	37 1.46	41 1.61	40 1.57	5 .2	2 .08	13 .51	13 .51	64 2.52	62 2.44	66 2.6	75 2.95	85 3.35	3.6 .14	G 1/4 B (1/4" BSP) M 12x1.5	1/4" NPT
63 Model KPChG	10 .4	13 .51	47 1.85	37 1.46	50 1.97	40 1.57	5 .2	2 .08	13 .51	13 .51	64 2.52	62 2.44	66 2.6	75 2.95	85 3.35	3.6 .14	G 1/4 B (1/4" BSP) M 12x1.5	1/4" NPT
10-times üs 63 Model KPCh Model KPChG	10 .4	13 .51	47 1.85	47 1.85	50 1.97	50 1.97	5 .2	2 .08	13 .51	13 .51	64 2.52	62 2.44	66 2.6	75 2.95	85 3.35	3.6 .14	G 1/4 B (1/4" BSP) M 12x1.5	1/4" NPT

NCS	g	g1	h ^{±1}	h1 ^{±1}	s	s1	s3	SW	approx. weight ¹⁾
63 Model KPCh	60 2.36	60 2.36	54 2.13	54 2.13	5 .2	2 .08	5.5 .22	14 .55	0.2 / 0.44
63 Model KPChG	60 2.36	60 2.36	54 2.13	54 2.13	5 .2	2 .08	5.5 .22	14 .55	0.26 / 0.57
10-fold üs 63 Model KPCh Model KPChG	70 2.76	70 2.76	54 2.13	54 2.13	5 .2	2 .08	5.5 .22	14 .55	0.21 / 0.46 0.26 / 0.57

¹⁾ Information for version without mounting device

Blow-out Device

Model KPChG
Case ventilation
no. 26 closable



Ordering Information with Standard Pressure Ranges, Options

Basic Model:		Capsule Gauge for Low Pressure, Bayonet Ring Case				KPCh
Case filling:	without					no code letters
	glycerin					G
Nominal case size:	case- Ø 63 (mm) (2½")				63	
Wetted material:	copper alloy				- 1	
	stainless steel				- 3	
Case configuration:	case / connection	screwed			no code letters	
	position of the connection	bottom			no code letters	
		centre back			rm	
mounting device	without				no code letters	
	back flange for surface mounting				Rh	
	front flange for panel mounting				Fr	
Pressure ranges:	mbar			inchWC		
	Vacuum	Compound ranges	Pressure	Vacuum	Compound ranges	Pressure
	-25 - 0	-10 - 15	0 - 25	10 - 0	-4 - 6	0 - 10
		-15 - 10			-6 - 4	
	-40 - 0	-15 - 25	0 - 40	-16 - 0	-6 - 10	0 - 16
		-25 - 15			-10 - 6	
	-60 - 0	-20 - 40	0 - 60	-25 - 0	-10 - 15	0 - 25
		-40 - 20			-15 - 10	
	-100 - 0	-40 - 60	0 - 100	-40 - 0	-15 - 25	0 - 40
		-60 - 40			-25 - 15	
	-160 - 0	-60 - 100	0 - 160	-60 - 0	-20 - 40	0 - 60
		-100 - 60			-40 - 20	
	-250 - 0	-100 - 150	0 - 250	-100 - 0	-40 - 60	0 - 100
	-150 - 100			-60 - 40		
-400 - 0	-150 - 250	0 - 400	-160 - 0	-60 - 100	0 - 160	
	-250 - 150			-100 - 60		
-600 - 0	-200 - 400	0 - 600	-250 - 0	-100 - 150	0 - 250	
	-400 - 200			-150 - 100		
Process connection:	standard thread	G ¼ B (¼" BSP)			G ¼ B	
	options:	¼" NPT			¼" NPT	
		M12x1.5			M 20x1.5	
		G ⅜ B (⅜" BSP)			G ⅜ B	
		⅜" NPT			⅜" NPT	
		M10x1			M10x1	
Options:	see page 4					
Example: KPCh 63 - 1, 0 - 160 mbar, G ¼ B						

Further Options regarding Ordering Information

Basic Model: Capsule Gauge for Low Pressure, Bayonet Ring Case		KPCh
Model Code:		see page 3
Options:	<p>red mark on the dial</p> <p>stationary on the dial,</p> <p>red pointer adjustable when removable ring</p> <p>stationary adjusting mechanism brass, nickelplated</p> <p>red pointer screwed with window</p> <p style="text-align: right;">adjustable externally removable key</p> <p style="text-align: right;">non-removable key</p> <p>adjusting mechanism stainless steel</p> <p>screwed with window</p> <p style="text-align: right;">adjustable externally removable key</p> <p style="text-align: right;">non-removable key</p> <p>maximum adjusting mechanism brass, nickelplated</p> <p>drag indicator screwed with window</p> <p>measuring span 160 mbar and above adjustable externally removable key</p> <p style="text-align: right;">non-removable key</p> <p>clockwise rotary pointer adjusting mechanism stainless steel</p> <p>motion; for vibration-free application screwed with window</p> <p style="text-align: right;">adjustable externally removable key</p> <p style="text-align: right;">non-removable key</p> <p>special adjustment</p> <p>case ventilation no. 22 for outdoor installation¹⁾</p> <p>case polished</p> <p>bayonet ring polished</p> <p>silicone-free version</p> <p>restrictor screw in orifice Ø 0.3 mm (0.01")</p> <p>pressure inlet port</p> <p>material: as process connection, brass or stainless steel</p> <p>overrange protection (üs) and / or low pressure protection (us)²⁾</p> <p>for types -1 3-fold üs³⁾ or us</p> <p>(copper alloy) 10-fold üs from 0 – 25 mbar</p> <p>10-fold us from -100 – 0 mbar</p> <p>combination 10-fold üs and 10-fold us</p> <p>only for compound ranges for spans 100 mbar (40 "WC) and above</p> <p>for types -3 3-fold üs³⁾ or us</p> <p>(stainless steel) 10-fold üs from 0 – 25 mbar</p> <p>10-fold us from -100 – 0 mbar</p> <p>combination 10-fold üs and 3-fold us</p> <p>only for compound ranges for spans 40 mbar (16 "WC) and above</p> <p>measuring point with stainless steel plate 12 mm x 55 mm (0.47" x 2.17"), wire mounting</p> <p>marking or sticker on the case coverage</p>	(order at present still in cleartext)

Special Versions: Please describe your requirements in cleartext

¹⁾ only for version -1 and span 100 mbar and above

²⁾ max. - 1000 mbar

³⁾ only for dry versions