

Combi Gauges for Rail Cars

With two Measuring Units

Model **DRChg 125 – 1Fz**

Application

Pressure gauges model **DRChg 125 – 1 Fz rmBFR**, are used for the measurement of two different pressures and are applied in rail cars, especially for pneumatic brake systems. The instruments are provided with u-clamps for panel mounting and they combine direct and indirect lighting.

Construction

The pressure gauges are provided with two independently working bourdon tube measuring systems. Each system has a separate pressure connection. A movement with separate pointer shafts transfers the pressure caused motion of the bourdon tubes onto the particular pointer.

Standard Version

Accuracy

Class 1.0 separate for each measuring system

Position of Installation

90°

Case

1.4301 (304 stainless steel)
with crimped-on ring, aluminium, black anodised

Temperature Limitations

Storage/Transport: -40° to +70° C (-40° to +158° F)
Operation: Ambience -40° to +60° C (-40° to +140° F)
Medium max. +60° C (+140° F)

Case Protection Type (EN 60529 / IEC 529)

IP 54 in front of the panel

Blow-out Device

Blow-out plug in the back of the case

Lighting

Directly 2 x BA9s 24 V / 2 W and
indirectly by lighting apertures in the case

Nominal Case Size

125 (mm) (5")

Wetted Parts

Connections: brass
Bourdon tubes: bronze, soft soldered, c-form

Case Configuration

Position of the connections: center back connection,
parallel one above the other (rm)
Mounting device: u-clamp for panel mounting (BFR)

Pressure Ranges

0 – 10 bar

Process Connection

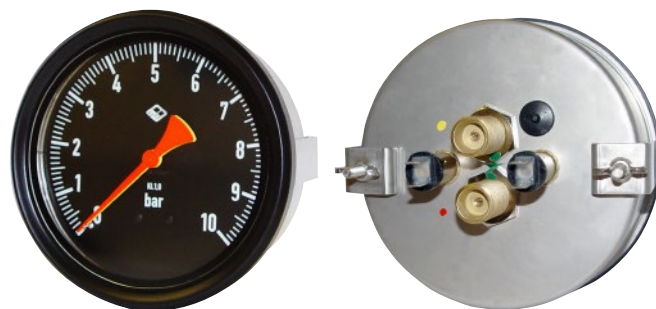
2 x M 16x1.5 including chuck cone for cutting ring
L 10 according to DIN EN ISO 8434-1

Including restrictor screw in each pressure inlet port,
orifice-Ø 0.8 mm (0.03").

Each process connection is marked with a coloured spot, matching the colour of the pointer.

Window

Reflex-reduced laminated safety glass



Movement

Brass / German Silver

Dial

Aluminium black, white scale, with zero stop (stop pin)

Pointer

2 x aluminium, 1 pointer red (RAL 3026), 1 pointer yellow (RAL 1016)

Safety Category according to EN 837-1

S1 pressure gauges with blow-out device

Options and others

- Instruments without combination of lighting, meaning either direct or indirect lighting
- Other pressure ranges, e. g. 0 – 16 bar
- Other than 90° installation
- Process connection with cutting ring and union nut
- Other process connections upon request
- Restrictor screw brass, orifice-Ø 1.0 mm (0.04"), in the inlet port
- Other colours for pointer, e. g. white (RAL 9010)
- Dial inscription (ZA) according to your demand, in terms of colour matching the pointer
- Coloured marks matching the pointers
- BA9s LED 24 – 32 V , 48 – 75 V, 110 – 150 V
- Other case configuration, lower back connection (r)

Ordering Information:

Model: **DRChg 125 – 1 Fz rmBFR**

Pressure range: **0 – 10 bar**

Process connection: **L 10**

Colour of pointer: front pointer: **red or yellow**
rear pointer: **red or yellow**

Specifics: e. g. dial inscriptions (**ZA**),
other position of installation etc.
(see above)

Example:

- DRChg 125 – 1 Fz rmBFR, 0 – 10 bar, L 10, front pointer red, rear pointer yellow



Sales and Export South, West, North

ARMATURENBAU GmbH

Manometerstraße 5 • D – 46487 Wesel-Ginderich
Tel.: +49 2803 9130 – 0 • Fax: +49 2803 1035
armaturenbau.com • mail@armaturenbau.com



Subsidiary Company, Sales and Export East

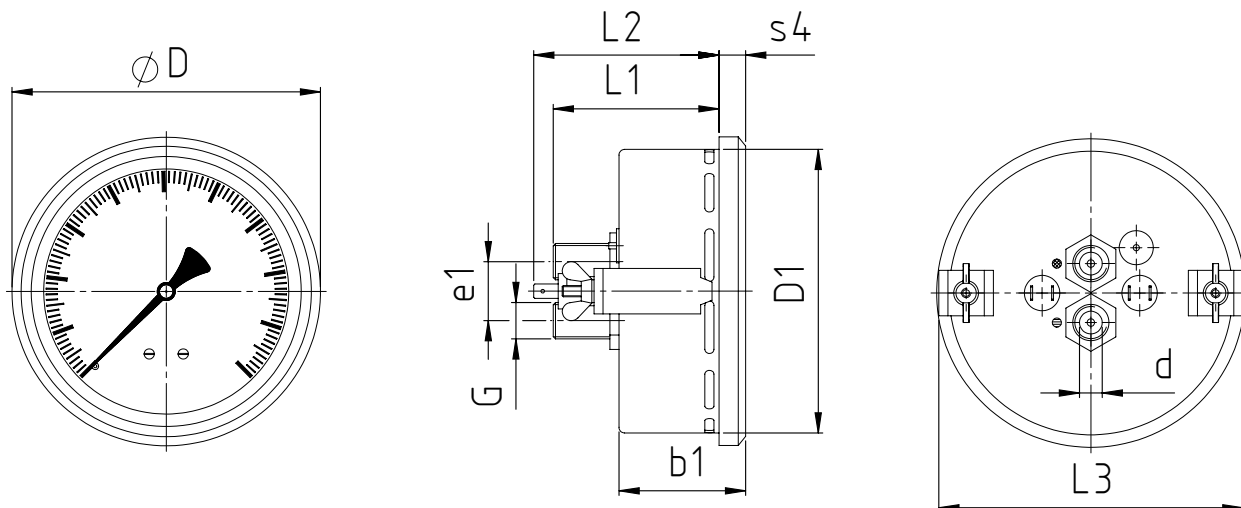
MANOTHERM Beierfeld GmbH 5901.1

Am Gewerbepark 9 • D – 08344 Grünhain-Beierfeld
Tel.: +49 3774 58 – 0 • Fax: +49 3774 58 – 545
manotherm.com • mail@manotherm.com

12/14

Case Configurations, Dimensional Data and Weights

DRChg 125 – 1 Fz rmBFr



Dimensional data (mm/ inches) and weights (kg/ lb)

NCS	b1	D	D1	Process connections DIN EN ISO 8434-1		e1	L1	L2	L3	s4	recommended panel cut out Ø	Weight (approx.)
				d ^{B11 1)}	G							
125	56	136	125	L10	M 16x1.5	26	74	83	134	11	128 ± 1	0.93
5"	2.2	5.35	4.92	.39		1.02	2.91	3.27	5.28	.43	5.04 ± .04	2.05

¹⁾Tolerance class according to ISO 286-2