

Beacon Library MTL

Installation Manual v2.1



Building the Future Today



Version 2.1	November 2012	CCAI-MTL-IM-2012A
-------------	---------------	-------------------

Beacon Library **MTL**

Installation Manual

November 2012

Version 2.1

Version 2.1	November 2012	CCAI-MTL-IM-2012A
-------------	---------------	-------------------

Copyright

Copyright © 2012 CooleyCore Associates Inc. All Rights Reserved.

Including software, file formats, and audiovisual displays; may be used pursuant to applicable software license agreement; contains confidential and proprietary information of Intergraph and/or third parties which is protected by copyright law, trade secret law, and international treaty, and may not be provided or otherwise made available without proper authorization.

Restricted Rights Legend

Use, duplication, or disclosure by the Government is subject to restrictions as set forth in subparagraph (c) of the *Contractor Rights in Technical Data* clause at DFARS 252.227-7013, subparagraph (b) of the *Rights in Computer Software or Computer Software Documentation* clause at DFARS 252.227-7014, subparagraphs (b)(1) and (2) of the *License* clause at DFARS 252.227-7015, or subparagraphs (c) (1) and (2) of *Commercial Computer Software---Restricted Rights* at 48 CFR 52.227-19, as applicable.

Unpublished---rights reserved under the copyright laws of the Canada.

CooleyCore Associates Inc.
Calgary, Alberta

Warranties and Liabilities

All warranties given by CooleyCore Associates Inc. about equipment or software are set forth in your purchase contract, and nothing stated in, or implied by, this document or its contents shall be considered or deemed a modification or amendment of such warranties. CooleyCore Associates Inc. believes the information in this publication is accurate as of its publication date.

The information and the software discussed in this document are subject to change without notice and are subject to applicable technical product descriptions. CooleyCore Associates Inc. is not responsible for any error that may appear in this document.

The software discussed in this document is furnished under a license and may be used or copied only in accordance with the terms of this license.

No responsibility is assumed by CooleyCore Associates Inc. for the use or reliability of software on equipment that is not supplied by Intergraph or its affiliated companies. THE USER OF THE SOFTWARE IS EXPECTED TO MAKE THE FINAL EVALUATION AS TO THE USEFULNESS OF THE SOFTWARE IN HIS OWN ENVIRONMENT.

Trademarks

CooleyCore, CooleyCore logo, TUF logo, Beacon are registered trademarks of CooleyCore Associates Inc.

MTL Instruments, MTL Instruments logo, are registered trademarks of MTL Instruments.

SmartPlant Instrumentation is a registered trademark of Intergraph.

Sybase Adaptive Anywhere Watcom are registered trademarks of Sybase Inc.

Microsoft and Windows are registered trademarks of Microsoft Corporation. Other brands and product names are trademarks of their respective owners.

Table of Contents

Table of Contents

- 1 Beacon Overview 3
 - 1.1 Beacon Library MTL Overview 3
- 2 Beacon Library MTL Software 7
 - 2.1 Beacon System Requirements 7
 - 2.2 Beacon SPI Compatibility 7
 - 2.3 Beacon Library MTL Licensing 7
- 3 Installation Procedure 11
- 4 Uninstall Procedure 17
- 5 User Support 23

CHAPTER

1

Introduction to Beacon

1 Beacon Overview

The Beacon application is made up of a suite of modules; this module is Beacon Library. For more information refer to www.CooleyCore.com.

1.1 Beacon Library MTL Overview

Beacon Library is the next generation solution to importing SmartPlant Instrumentation[®] (SPI) Wiring Module Reference Library items. Beacon Library MTL is currently made up of [105](#) standard representations of MTL, MTL- Relcom, and BEKA Foundation Fieldbus products.

‘Beacon Library MTL’ supersedes the previously published application known as ‘Beacon Stock’. All past products offered within ‘Beacon Stock’ have been incorporated into Beacon Library MTL along with many new products. Refer to the [Beacon Library MTL User Manual, Appendix A](#) for details.

Beacon Library MTL Software

2 Beacon Library MTL Software

Beacon is a Windows desktop application configured to directly connect to the target SPI database.

2.1 Beacon System Requirements

Beacon minimum requirements:

- Windows XP, Windows Vista, or Windows 7 (32 bit)
- .Net 2.0 Framework
- Adobe Reader (required to read the User Manual)
- Full read/write permissions to the installed **CooleyCore** parent folder and its subfolders.

2.2 Beacon SPI Compatibility

Beacon is compatible with SPI v. 7, v.2007, and v.2009 Service Pack 4 inclusive.

Beacon is not compatible with Sybase Adaptive Anywhere Watcom databases.

2.3 Beacon Library MTL Licensing

CooleyCore Associates Inc. has sole ownership rights to the Beacon Library MTL software.

MTL Instruments has sole ownership rights pertaining to the representation of the MTL, MTL-RELCOM, and BEKA products offered in this Library.

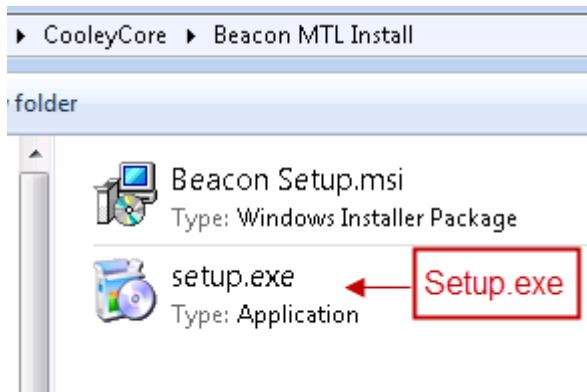
The end user is granted a royalty free license with unlimited direct usage of Beacon Library MTL by MTL Instruments and CooleyCore Associates Inc. NO rights to redistribution; reverse engineering or inclusion in other products or usage without the express written permission of MTL Instruments or CooleyCore Associates Inc. is permitted.

Installation Procedure

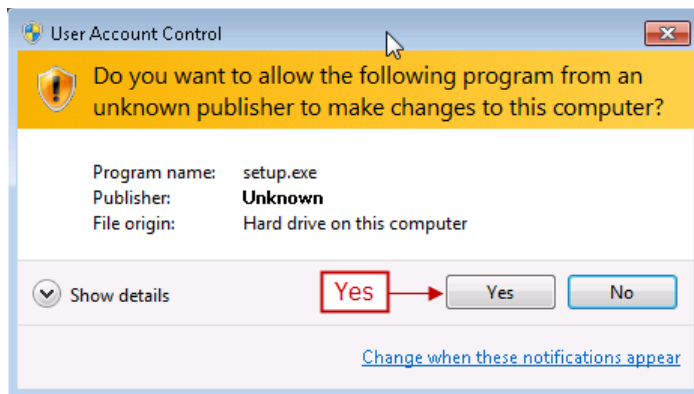
3 Installation Procedure

This section of the manual is dedicated to capturing the installation procedure.

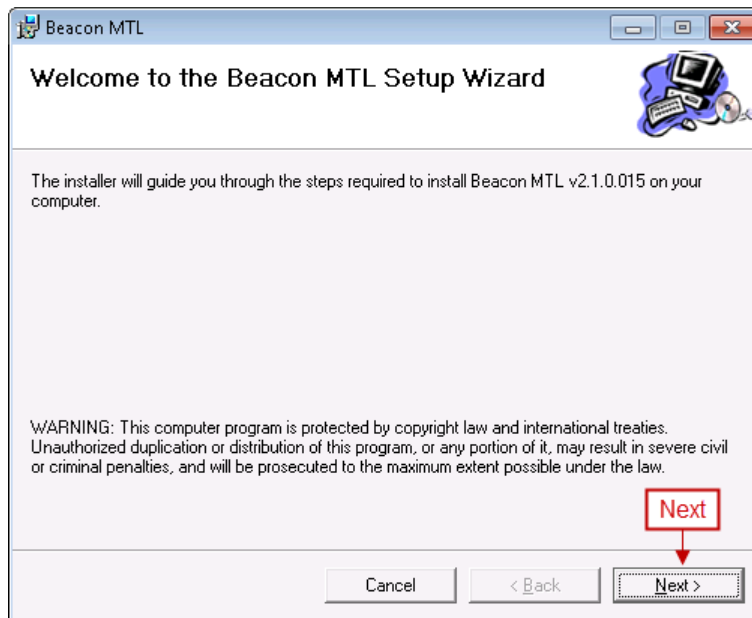
3.1 Run the **setup.exe**.



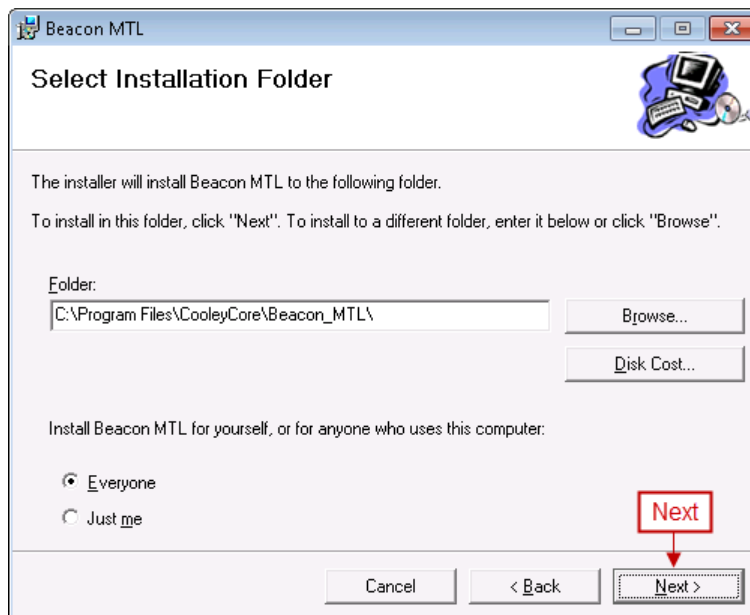
3.2 Windows 7 security on your desktop machine may result in the following **User Account Control** interface appearing. If the interface does appear, select '**Yes**'. Note this message will not appear within previous versions of the Windows operating system.



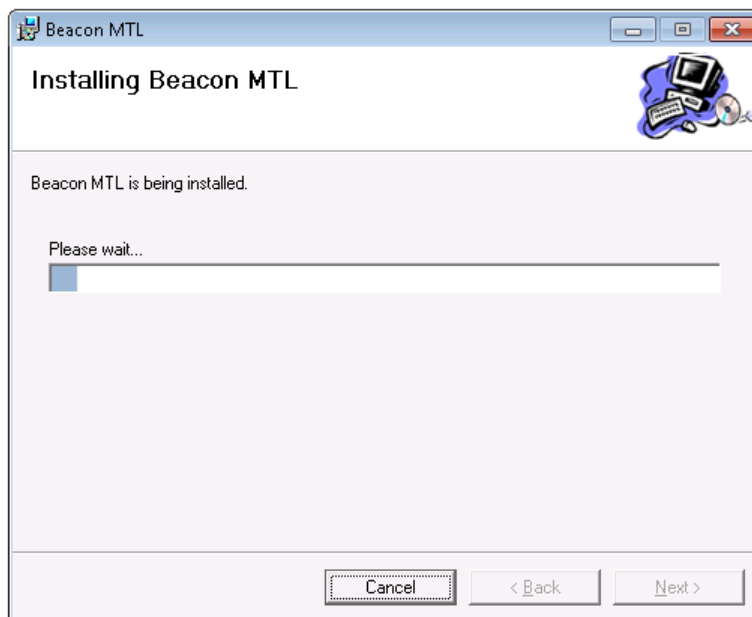
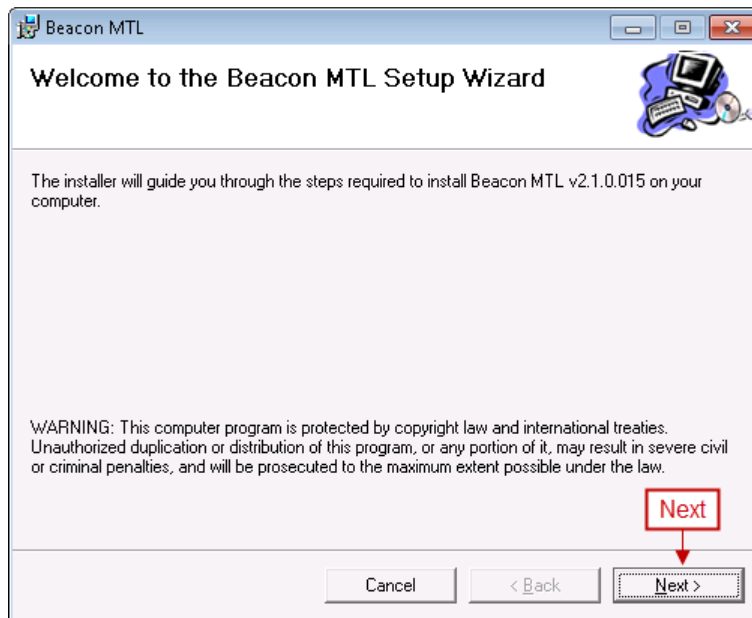
3.3 Select 'Next' on the Welcome Wizard interface.



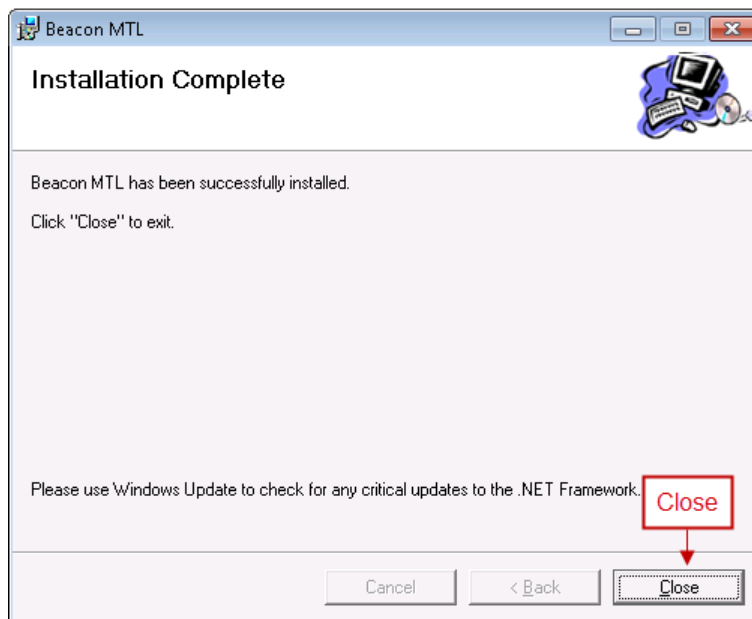
3.4 Browse to a location for the application to be installed. Select 'Next'.



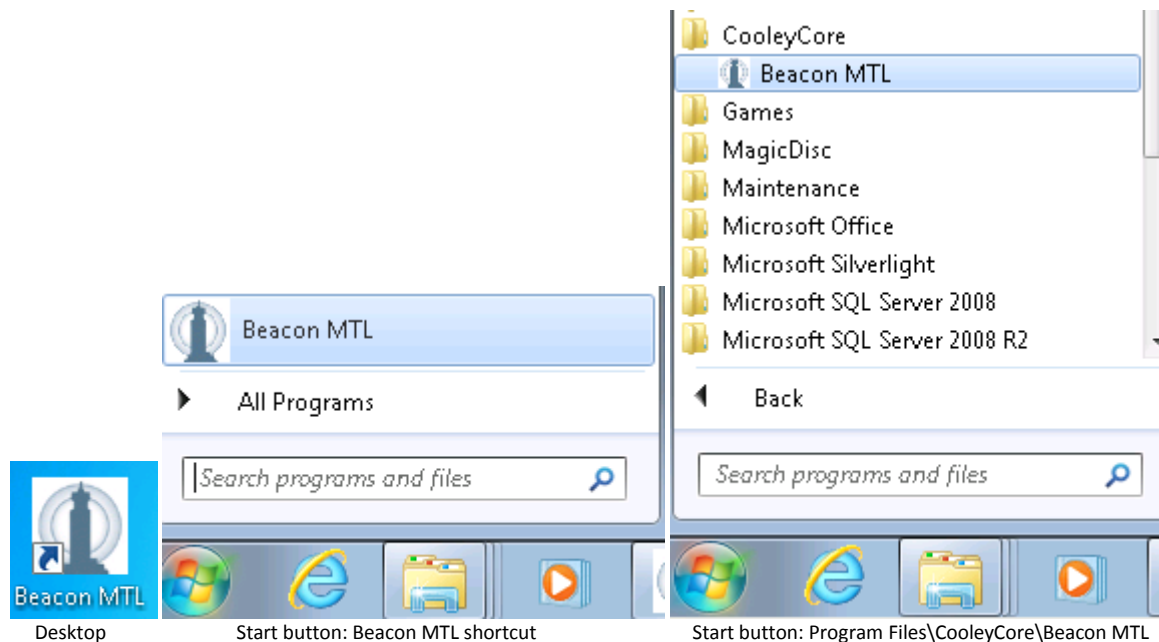
3.5 Select 'Next' to continue with the install on to the desktop computer.



3.6 The install has completed. Select '**C**lose' to close the setup.exe install program.



3.7 The install should result in a shortcuts being added to the Desktop, and the Start menu.



For details pertaining to the database connection configuration process and user instructions please refer to the [Beacon MTL Library User Manual](#).

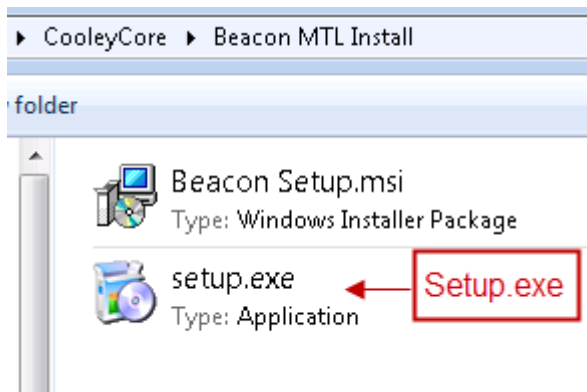
Uninstall Procedure

4 Uninstall Procedure

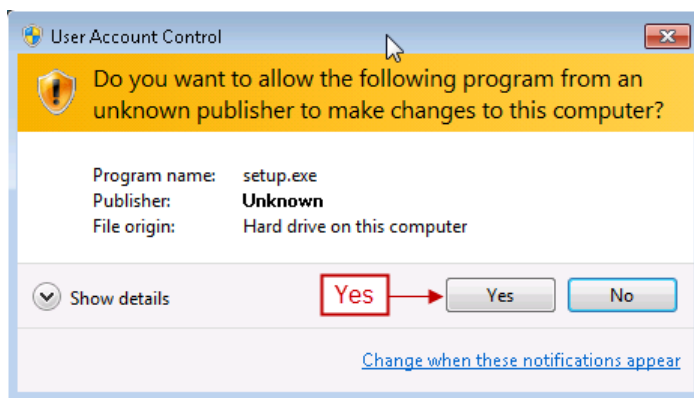
This section of the manual is dedicated to capturing the uninstall procedure. There are two options with regards to uninstalling Beacon Library MTL.

- a. Windows Control Panel -> remove program
- b. Beacon MTL '**setup.exe**' – The detailed instructions captured in this document outline the steps involved with using the Beacon MTL '**setup.exe**'.

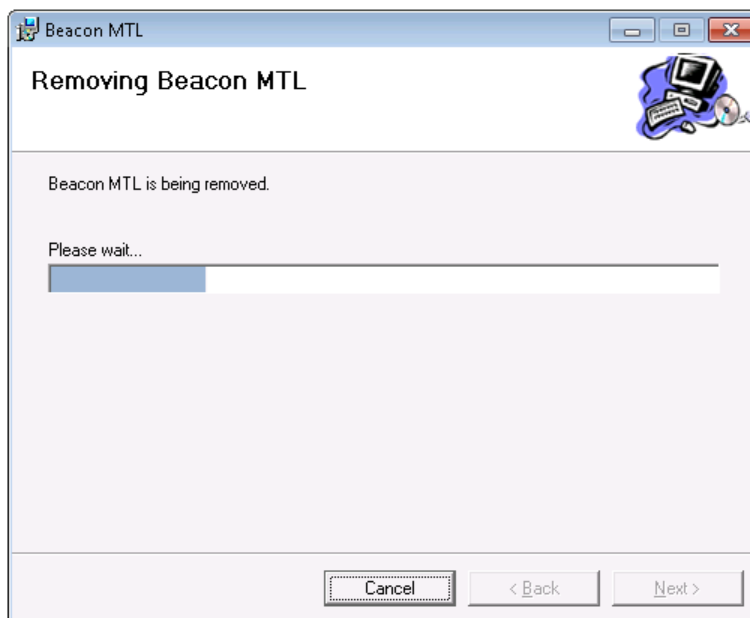
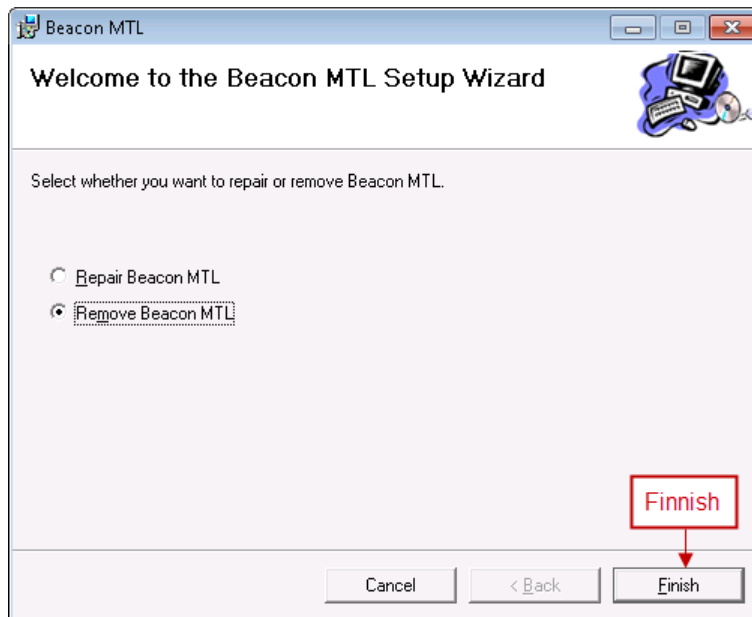
4.1 Run the **setup.exe**.



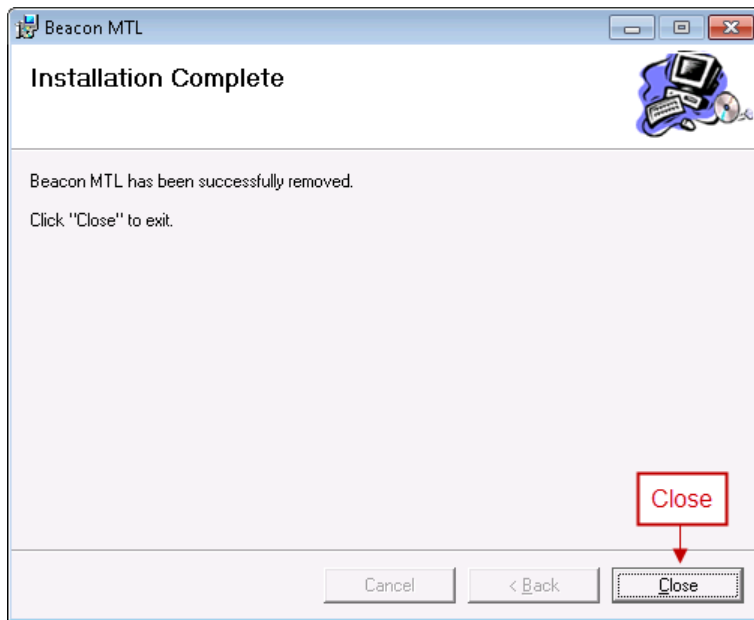
- 4.2 Windows 7 security on your desktop machine may result in the following **User Account Control** interface appearing. If the interface does appear, select '**Yes**'. Note this message will not appear within previous versions of the Windows operating system.



- 4.3 Select '**Remove Beacon MTL**' on the Welcome Wizard interface. Select '**Next**' to continue with the removal.



4.4 Uninstall has completed. Select '**C**lose' to close the setup.exe uninstall program.



4.5 Previously installed shortcuts will be removed now from the Desktop, and the Start menu.

User Support

5 User Support

Open questions pertaining to the Product line are to be directed to MTL Instruments by either phone or email. Open questions pertaining to the use of the Beacon Library MTL software are to be directed to CooleyCore Associates Inc. When in doubt who to contact send an email or phone both companies.



MTL Instruments

Phone: <http://www.mtl-inst.com/contact/>

E-mail: mtlsupport@cooperindustries.com



CooleyCore Associates Inc.

Phone Support: 403.975.9797

E-mail: Support@CooleyCore.com

