

Accessories

Connection screw fittings, welding pieces
for thermometer stems and thermowells

AV1 / AV2
S1

Versions

Model AV1

Description

Connection screw fitting
connection-connection (2 x male thread)

Application

Thread adapter

Application Field

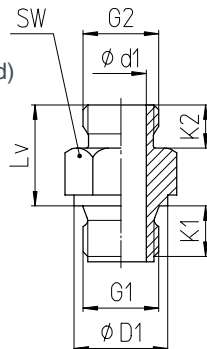
Thermometer stem A3/B3,
Thermowells with female thread N

Material

1.4571 (316 stainless steel)

Options

Other materials and thread combinations upon request



Dimensional Data (mm / inches)

G1	G2	D1	d1	K1	K2	Lv	SW		
G 1/2 B	G 1/2	26	14	14	12	28	27		
		1.02		0.55			0.47	1.06	
G 3/4 B	G 3/4	32	14	16	14	28	32		
		1.26		0.63			0.55	1.26	
1/2" NPT	G 1/2	–	0.55	19	12	28	27		
3/4" NPT		0.75		0.47			1.06		
M 20x1.5	M 20x1.5	25	14	14	12	28	32		
		0.98						0.55	0.47
M 24x1.5		29						1.14	
M 27x2		32						1.26	0.63

Ordering information: AV1, G1= G 3/4 B, G2= G 1/2 B, 1.4571

Model AV2

Description

Connection screw fitting
bushing-connection (female-/male thread)

Application

Thread adapter

Application field

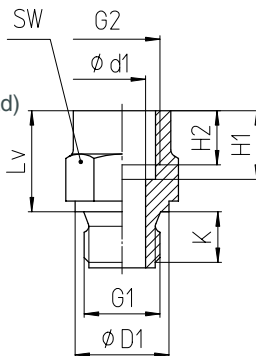
Thermometer stem A4/B4, A4.1/B4.1

Material

1.4571 (316 stainless steel)

Options

Other materials and thread combinations upon request



Dimensional Data (mm / inches)

G1	G2	D1	d1	H1	H2	K1	Lv	SW		
G 1/2 B	G 1/2	26	13	15	19	14	28	27		
		1.02		0.59		0.75		0.55	1.06	
G 3/4 B	G 3/4	32	13	22	17	16	28	32		
		1.26		0.87		0.67		0.63	1.26	
1/2" NPT	G 1/2	–	0.51	15	19	19	28	27		
3/4" NPT		0.75				1.10		1.06		
M 20x1.5	M 20x1.5	25	13	15	19	14	28	32		
		0.98							0.59	0.75
M 24x1.5		29							1.14	
M 27x2		32							1.26	0.63

Ordering information: AV2, G1= G 3/4 B, G2= G 1/2, 1.4571

Model S1

Description

Welding piece with female thread
for thermometer stem and thermowells

Application

Process connection

Application Field

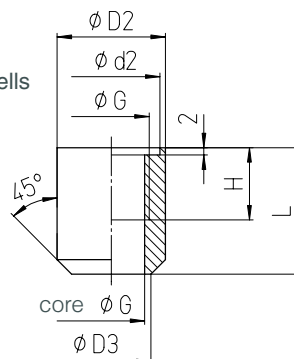
Thermometer stem A4.1/B4.1
thermowells for screwing-in,
e.g. SF5, SF6, SF7, SF8, SF9

Material

Steel

Options

Other materials and threads upon request



Dimensional Data (mm / inches)

G	D2	d2	D3	L	H
G 1/2	30	27	22	35	20
M 20x1.5	1.18	1.06	0.87	1.38	
G 3/4	38	33	28	50	0.79
M 27x2	1.50	1.30	1.10	1.97	

Ordering information: S1, G = G 3/4, Stahl



Sales and Export South, West, North

ARMATURENBau GmbH

Manometerstraße 5 • D-46487 Wesel - Ginderich
Tel.: +49 (0)28 03/91 30-0 • Fax: +49 (0)28 03/10 35
armaturenba.u.com • mail@armaturenba.u.com

Subsidiary Company, Sales and Export East

MANOTHERM Beierfeld GmbH 8.8201

Am Gewerbepark 9 • D-08344 Grünhain-Beierfeld
Tel.: +49 (0)37 74/58-0 • Fax: +49 (0)37 74/58-545
manotherm.com • mail@manotherm.com