

Thermowell Form 4.1F

for flanging
for stem with union nut

Model
SF4.1F

Application

Thermowells are applied to protect thermometer stems against process-related chemical and / or mechanical loads. Furthermore, a thermowell that remains at the measuring point, allows for unproblematic dismounting of the thermometer for maintenance or repair purposes.

Standard Versions

For thermometer stems with union nut, our models A3 and B3.

Construction Type

Thermowell (identical with thermowell model SF4.1, i. e. solid drilled with cone) with welded process connection flange for high process loads (flows, pressures, temperatures and vibrations).

Process Connection

Connection flange according to DIN EN 1092-1.

Sealing face Form B1,

Nominal size DN / nominal pressure PN

DN 50 PN 10 – 16

DN 50 PN 25 – 40

Connection to Thermometer Stem N

Male thread G ½ or G ¾

See reverse side for details

Internal Diameter d1

Ø 7 mm suitable for stem-Ø dF 6 mm

Ø 9 mm suitable for stem-Ø dF 8 mm

Ø 11 mm suitable for stem-Ø dF 10 mm

Ø 13 mm suitable for stem-Ø dF 12 mm

See reverse side for available combinations of connections to thermometer stem N and internal diameter d1.

Total Length L (Standard)

200, 260, 320 mm

See reverse side for details and installation length U1.

Material

1.4571 (316 L stainless steel)

Process Temperature / Process Pressure

Maximum allowed process temperature: 500 °C

Maximum allowed process pressure: corresponding to PN of the flange

The specific process conditions (medium, flow rate, pressure, temperature) and the thermowell version (dimensions, material) can cause a reduction of the above mentioned maximum allowed values, see **load diagrams DIN 43 772**.

Upon request, we carry out a **thermowell calculation** for your specific case of application (see special version and options).



Special Versions and Options among others

- Connection thread to thermometer stem N M 20x1.5 (instead G ½), others upon request
- Other thermowell-Ø upon request
- Other thermowell / installation length L / U1 and cone length U upon request
- Flanges according to other standards or other nominal sizes upon request
- Other materials upon request
- Thermowell free of grease and oil
- Coating adjusted to medium and medium temperature upon request
- Test report 2.1
- Inspection certificate 2.2
- Test certificate 3.1 for the material
- Test certificate 3.1 for the pressure test upon request

Ordering Information

Model	SF4.1F
Process connection flange	DN 50, PN 10 – 16 or DN 50, PN 25 – 40
Nominal size / nominal pressure	DN / PN
Connection to thermometer stem N	G ½ B or G ¾ B
Innen-Ø d1	7, 9, 11 or 13 mm
Total length	L
Installation length	U1
Material	1.4571

Example: SF4.1F, DN 50, PN 10 – 40, N = G ¾ B, d1 = 11, L = 200, U1 = 130, 1.4571



Sales and Export South, West, North

ARMATURENBAU GmbH

Manometerstraße 5 • D-46487 Wesel - Ginderich
Tel.: +49 (0)28 03 / 91 30-0 • Fax: +49 (0)28 03 / 10 35
armaturenbau.com • mail@armaturenbau.com

Subsidiary Company, Sales and Export East

MANOTHERM Beierfeld GmbH

Am Gewerbepark 9 • D-08344 Grünhain-Beierfeld
Tel.: +49 (0)37 74 / 58-0 • Fax: +49 (0)37 74 / 58-545
manotherm.com • mail@manotherm.com

8.8113

12/13

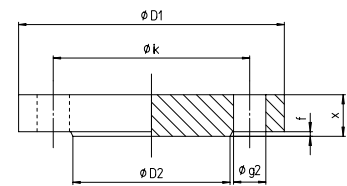
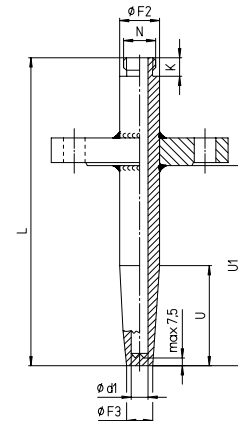
Dimensions, Lengths, corresponding Thermometer Stems

Dimensional Data (mm)

SF4.1F

Thermowell Diameter and Connection Dimensions

F2	N	d1	F3	K
26 h 7	G ½ B (M 20x1.5)	7	12.5	12
		9	15	
		11	17	
32 h 11	G ¾ B	13	19	14



Flange Dimensions DIN EN 1092-1: 2001

DN	PN	D1	D2	g2	k	x	f
mm	bar	mm	mm	mm	mm	mm	mm
50	10 – 16	165	102	4x Ø 18	125	18	2
50	25 – 40	165	102	4x Ø 18	125	20	2

Thermowell Total Length, Installation Length and Thermometer Stem Length

standard thermowell lengths and suitable stem lengths L

Thermowell lengths (standard)			Suitable Stem Length Model A3 / B3
Total length L ⁺²	Install. length U1 ⁺²	Cone length U ⁺²	
200	130	65	192
260	190	125	
320	250	245	312

other thermowell lengths

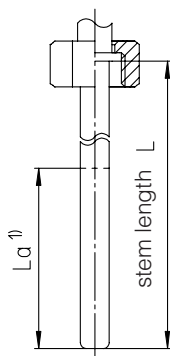
Calculation

- Thermowell length with existent stem stem model A3 / B3
thermowell length L = L (stem) + 8 mm
- Stem length with existent thermowell stem model A3 / B3

Thermometer Stem

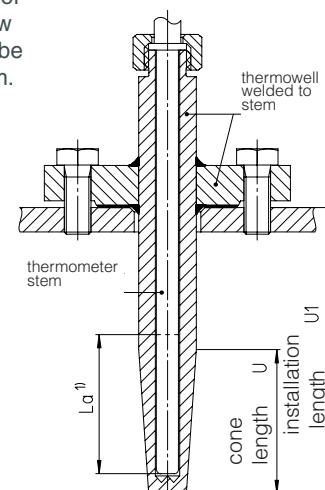
corresponding thermometer stem

Models A3 / B3
union nut
Form 5 DIN EN 13 190



installation examples

The installation length U1 of the thermowell has to allow for the active length La to be surrounded by the medium.



¹⁾ La = active length
The active stem length La can be found in the thermometer data sheets.