

Special Stems for Gas-Actuated Thermometers

A1.1

A1.2

Contact stems

Application

For temperature measurement at the outsides of tanks and pipe barrels up to 300 °C.

Standard Versions

For thermometers with rigid connection to stem or for thermometers with max. 5 m capillary line.

Temperature Sensor (Stem)

1.4571 (316 stainless steel),
max. medium temperature 300 °C
installation surface plain or convex
Model A1.1 installation surface plain
Model A1.2 installation surface convex



A1.1



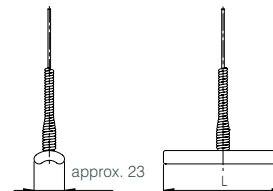
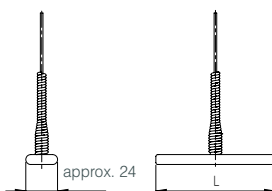
A1.2

Options among others

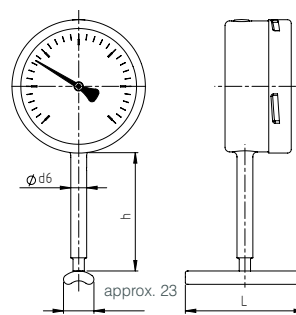
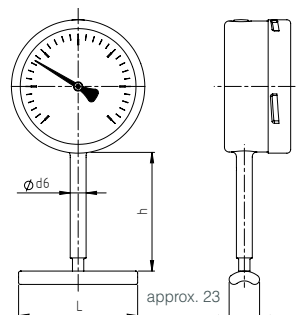
- Turnable connection between neck tube and stem
- Contact stem with special dimension

Stem Model:	A1.1	A1.2
Contact stem:	plain	convex
Rigid connection:	For an order of thermometers with rigid connection to stem the installation version (no. of drawing) has to be selected in addition to the stem model: The following description is being exemplified with the convex version A1.2	

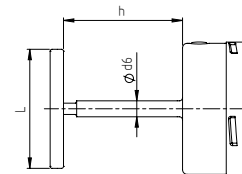
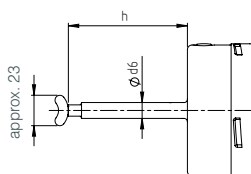
Capillary line:



Bottom position:



Centre back position:



Dimensional Data (mm / inches)

h	90	3.54"
d6	12	0.47"
Stem length L	90	3.54"

© 2013 ARMATURENBAU GmbH and MANOTHERM Beierfeld GmbH. Changes, replacement of materials and printing errors excepted



Sales and Export South, West, North
ARMATURENBAU GmbH
Manometerstraße 5 • D-46487 Wesel - Ginderich
Tel.: +49 (0)28 03/91 30-0 • Fax: +49 (0)28 03/10 35
armaturenbau.com • mail@armaturenbau.com

Subsidiary Company, Sales and Export East
MANOTHERM Beierfeld GmbH
Am Gewerbepark 9 • D-08344 Grünhain-Beierfeld
Tel.: +49 (0)37 74/58-0 • Fax: +49 (0)37 74/58-545
manotherm.com • mail@manotherm.com

8299.4

04/13